

<b>Código:</b>	<b>EM-081218</b>	<b>Módulo:</b>	<b>EMPRESA</b>
<b>Data:</b>	<b>18/12/2008</b>	<b>Revisão:</b>	<b>TÉCNICA</b>
<b>Assunto:</b>	<b>Importar arquivo TIPI</b>		

- Entrar no Sistema *EMPRESA*.
- Selecionar na barra a opção *MOVIMENTO DIÁRIO* e no painel selecionar a opção *MOVIMENTO DIÁRIO*

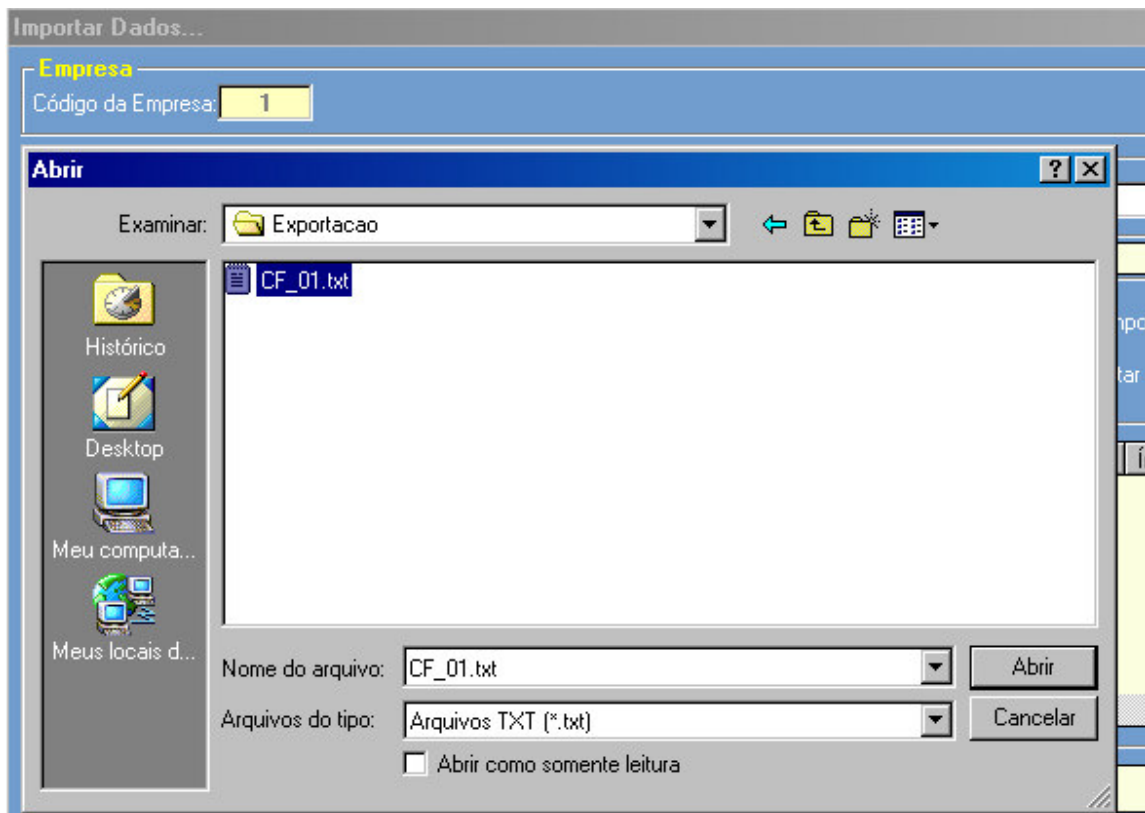


Figura - 01

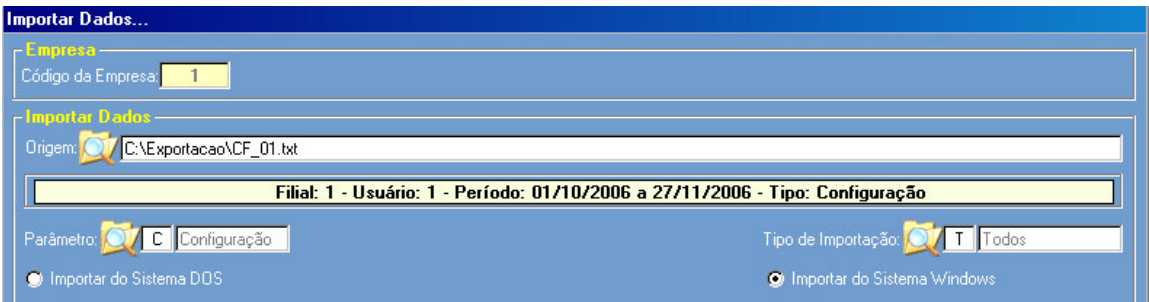


Figura - 02

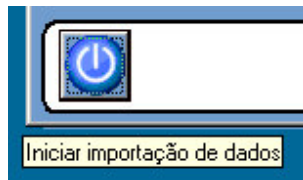


Figura - 03

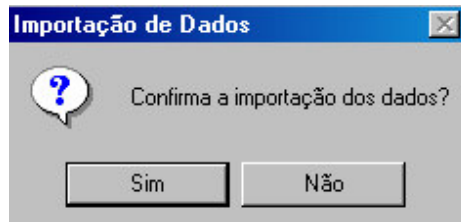


Figura - 04

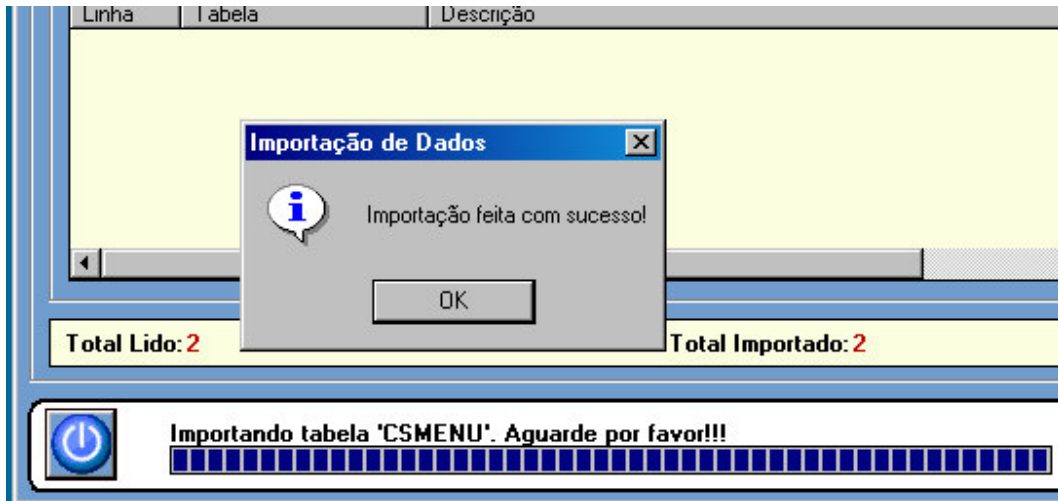


Figura - 05